

KIP 700M - EXCEPTIONAL MULTIFUNCTION VALUE





THE KIP 700M IS THE HIGHEST VALUE WIDE FORMAT MULTIFUNCTION SYSTEM IN THE WORLD. IT SETS NEW STANDARDS FOR PROFESSIONAL QUALITY AT A BREAKTHROUGH VALUE/ PERFORMANCE LEVEL.

**COMPACT
CONSOLE
DESIGN**

KIP 700m

**Exceptional
MULTIFUNCTION VALUE**



**KIP 700m
PRECISION DESIGN**

- Premier Performance & Quality
- Smart Eco² Design
- Colour Touch Controls
- 600 x 600 dpi Print, Copy & Scan
- High Definition Print Technology
- 100% Toner Efficient- Zero Waste
- Energy Star Qualified System
- Recycled Paper Approved
- Components 97% Recyclable

**KIP 700m PRINT
MANAGEMENT SOFTWARE**

- Web Based View & Print
- PC Based View & Print
- PDF & DWF View, Print & Scan
- Colour Workflow Integration
- Onscreen Image Preview
- Multi Page File Support
- Windows 7 Certified Driver
- AutoCAD 2013 Driver
- Cost Reporting for all Functions

**KIP 700m
OPERATIONAL CONVENIENCE**

- Walk-Up Operational Convenience
- Print, Copy & Scan Touch Controls
- View & Print Sets from Touchscreen
- Print From / Scan to Integrated USB Port
- Colour Scan to File & Colour Copy to Inkjet and KM MFP
- Auto Media Loading
- Front Print Delivery System
- On Screen System & Operator Guides
- Paper Tray - A4 to A2 Size Sheets



KIP 700m System Convenience

The compact design of the KIP 700m provides front access to the touchscreen, auto roll paper loading, system operation & copy/print delivery.



Front System Access

KIP 700m Paper Versatility

The automated paper loading of the KIP 700m accepts up to a 175 m roll of media (2" or 3" core) up to 36"/914 mm wide. Paper tray for standard sizes up to A2 extends the range of print sizes that can be produced without switching rolls.



Paper Tray

Ultimate Document Mobility

An integrated USB port provides convenient access to files stored on USB drives for instant viewing & printing of single documents or full collated sets. In addition, originals may be directly scanned to a USB drive in a variety of file types, including multipage PDF, TIF & DWF formats.

- Conveniently integrated with KIP 700m touchscreen
- Print from & scan to integrated USB port
- Streamlines mark-up document workflow
- Colour scan to file & colour copy to inkjet with quality presets

KIP 700m Precision Imaging

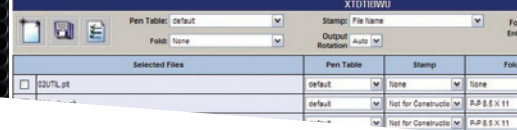
The KIP 700m delivers fast and accurate copies and prints using toner based imaging technology that produces UV stable prints. 100 % toner efficient KIP High Definition Print Technology ensures rich blacks and smooth gradients. Superior 600 x 600 dpi print, copy and scan resolution captures fine details with remarkable tone clarity, keeping reproductions true to the original.



KIP 700m Integrated USB Port



KIP 700m High Definition Printing



KIP 700m Total Print MANAGEMENT

P KIP Print

KIP Print network printing software is an easy to use application designed to provide operators with a fast and accurate means of producing high quality print sets from all types of wide format digital files. An intuitive ribbon style interface with an emphasis on job building; featuring column browsing, colour thumbnail previews and total preflight control. Colour and B&W documents are efficiently selected for printing in collated sets with the ability to designate custom output preferences before print submission.



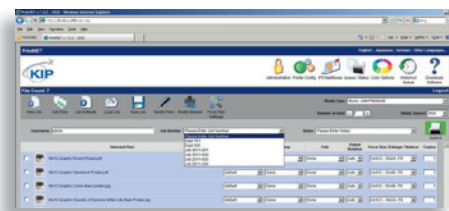
Intuitive New Ribbon Style Interface

KIP Print Key Features

- New Graphical User Interface
- Easy to use automated installation and setup
- Windows 7 style ribbon bar for easy feature selection
- Thumbnail preview and image size while selecting files
- Graphical choice of predetermined image settings
- Force size scaling to page size and roll width
- Two-Up printing for multi-copy nesting
- Output size updates as scaling is adjusted
- WYSIWYP thumbnail image viewer
- Custom job build columns
- Re-order and set individual settings for multi-page files
- Custom fold pattern for each file
- KIP Cost Review Application
- KIP Track System

P@ KIP PrintNET

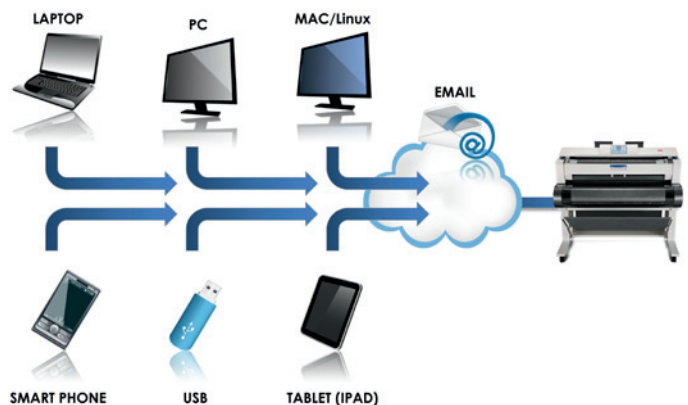
KIP PrintNET is a true web-based print production tool that delivers powerful colour file viewing & printing, job queue management and administration features without the need to install any software applications on network computers. Users may select and send single or multiple files to KIP systems, complete with image adjustments such as scaling, stamping and colour management! In addition, KIP PrintNET generates email reports detailing system usage on demand or at designated intervals.

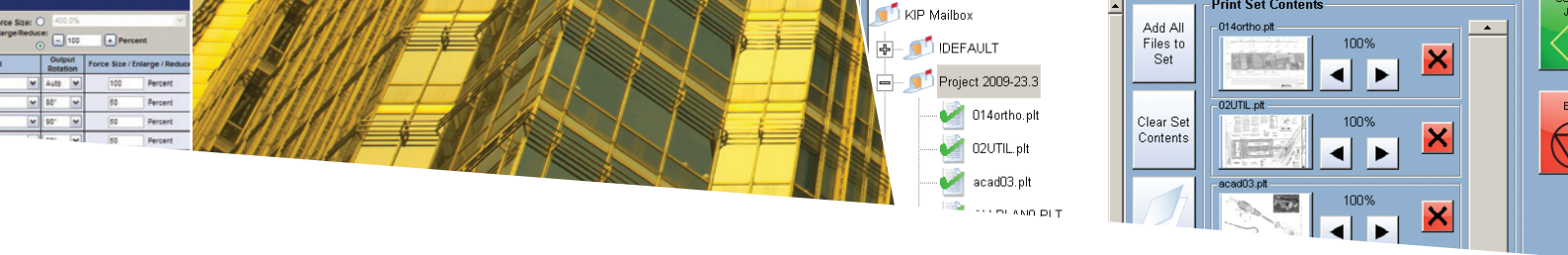


Web-Based, Browser-Independent

C KIP Cloud Printing

Cloud Printing is a convenient, driverless print solution that lets casual users forget that complex front end printer software ever existed. With print job set up and submission via email, users benefit from problem-free remote printing to the mailbox/queue of any KIP printer, or may be configured to bypass the mailbox for immediate output.





Touchscreen PRINTING

KIP 700m Touchscreen Printing

The KIP 700m provides the power of touch controls to view, scale, organise and print file sets from USB drives, network locations or mapped CD/DVD drives. Total operator efficiency is achieved through use of the central touchscreen, the intuitive interface that displays all system control settings on one screen to enhance productivity.

View & Print Touch Controls

- From integrated USB port
- From network locations
- From mailboxes
- View images prior to printing
- Set number of prints
- Easily resize images
- Simple collation options



Create Print Sets from the Central Touchscreen

Copy & Scan Touch Controls

- Collated sets copying
- Recall, edit & reprint previous jobs
- Set copy & concurrent print
- Convenient quality presets
- Apply digital stamps
- Scan directly to multi-page PDF, TIF or DWF
- Scan to email and USB drives



The ultimate in copy, scan and print technology is right at your fingertips.

KIP Colour Advanced

Powerful KIP Colour Advanced software provides versatile colour scan, copy and print applications designed to meet the demands of advanced operators from the KIP 700m touchscreen. KIP Colour Advanced features powerful colour copying and printing to wide format inkjets. Features such as collated set printing and colour management provide advanced control over print resources.

KIP Colour Advanced Printing:

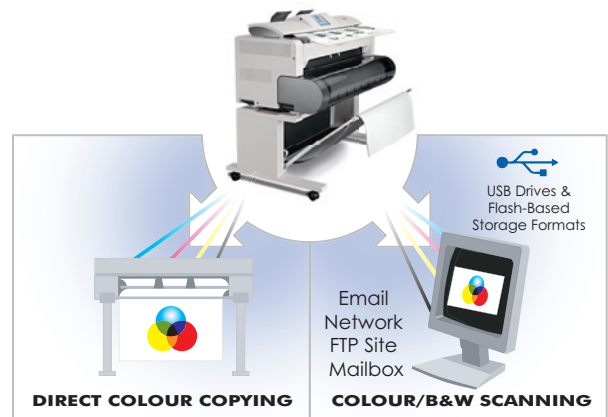
- Integrates with single or multiple printers
- Colour RIP system for graphic and technical files

KIP Colour Advanced Scanning:

- Supports a full range of colour file formats
- Scan to email, USB drives, mailboxes or network

KIP Colour Advanced Copying:

- Copy to one or several printers via network connection
- Nesting, paneling, collated sets printing & cropping



Certified Application Drivers

KIP application drivers support 32- & 64-Bit printing features including set collation, fast spooling for multiple copies or sets, data tracking for job accounting & media selection.

- Microsoft Windows 7 Certified 32- & 64-Bit print drivers
- Drivers for AutoCAD versions up to 2013
- Citrix ready



KIP Systems and Application Drivers Certifications



**MANAGE
MONITOR EVERY TASK**

**EVERY JOB
ACCOUNT FOR EVERY USER**

Maximise The Power of The Web to Manage your System

KIP 700m systems eliminate all barriers to efficient web-based system management. The KIP 700m integrated PrintNET web server allows users and administrators to effectively communicate from remote locations with an intuitive new icon based interface.



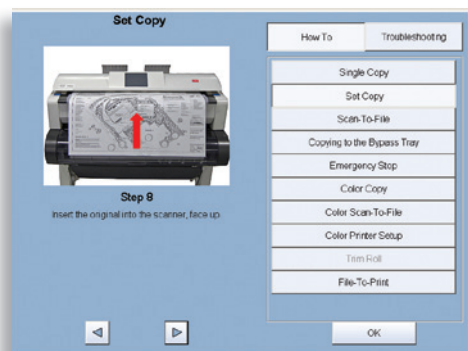
Complete Communications Hub

KIP 700m systems provide advanced features with simple operation for unequaled wide format performance. KIP 700m systems are powered by KIP total print management software for superior productivity and the tightest possible integration with existing network infrastructures.

The ability to communicate with inkjet printers and remote workstations increases performance and the power to execute simultaneous copying, printing, and scanning tasks supports multiple users in busy workgroup environments.

- Meets strict security guidelines
- Integrated web server
- On screen system & operator guides
- Print management applications

KIP 700m system operation is simplified with direct access by the operator to the touchscreen system & operator guides. Remote access to the guides is achieved via KIP PrintNET web solutions.



KIP 700m On Screen Operator Guides



KIP Cost Review Application

Print costs vary due to toner coverage, media type and system maintenance. These costs are calculated by the KIP Cost Review Application and translated into detailed reports to accurately invoice users, departments, projects or clients. KIP Cost Review Application reports can be delivered via email at or printed on demand.

Standard reports include:

- Printable Usage Summary
- View Toner Coverage Report
- View Media Details
- View Recent Jobs Report

KIP Track System

When activated, the KIP Track system requires operators to provide username & password information before operating a KIP system. Activity reports can then be generated related to individual users or projects. KIP Track print controls are integrated with the KIP Cost Review Application and included in all KIP print production software applications.

KIP 700m Versatile System Configurations

The KIP 700m multifunction system is available in a variety of configurations, providing the versatility to select an initial system with features to suit immediate requirements.

KIP 700m Feature Access Keycodes

KIP 700m additional features can be easily implemented via keycode entry at the touchscreen as required.

Smart Eco² Design - Economical & Ecological

The Energy Star[®] qualified KIP 700m employs adjust-able sleep modes to keep power consumption to a minimum while providing fast print times to keep busy workgroups moving. High yielding, 100 % efficient high definition toner delivers on the promise of maximum system uptime. In addition, the KIP 700m features a reduced maintenance cycle and colour coded snap-in parts designed to minimise maintenance times. The KIP 700m is part of KIP's initiative to ease environmental burdens in all stages of a product's life-cycle.

Distributor	Cyan				Magenta				Yellow				Total			
	#	Doc #	Page #	Cost	#	Doc #	Page #	Cost	#	Doc #	Page #	Cost	#	Doc #	Page #	Cost
J00 100-087 CAC PRINTING	0	0	0	\$0.00	13	134	\$12.94	93	134	\$12.94	93	134	\$12.94	134	134	\$12.94
J00 100-087 GRAPHICS PRINTING	0	0	0	\$0.00	15	154	\$15.32	93	154	\$15.32	93	154	\$15.32	154	154	\$15.32
J00 100-083 CAC PRINTING	0	0	0	\$0.00	15	154	\$15.34	93	154	\$15.34	93	154	\$15.34	154	154	\$15.34
J00 100-086 GRAPHICS PRINTING	0	0	0	\$0.00	15	154	\$15.32	93	154	\$15.32	93	154	\$15.32	154	154	\$15.32
J00 100-084 CAC PRINTING	0	0	0	\$0.00	24	242	\$18.95	24	242	\$18.95	24	242	\$18.95	242	242	\$18.95
J00 100-086 GRAPHICS PRINTING	0	0	0	\$0.00	24	242	\$18.92	93	242	\$18.92	93	242	\$18.92	242	242	\$18.92
J00 100-082 CAC PRINTING	0	0	0	\$0.00	15	154	\$15.34	93	154	\$15.34	93	154	\$15.34	154	154	\$15.34
J00 100-086 GRAPHICS PRINTING	0	0	0	\$0.00	15	154	\$15.32	93	154	\$15.32	93	154	\$15.32	154	154	\$15.32
J00 100-084 CAC PRINTING	0	0	0	\$0.00	15	154	\$15.34	93	154	\$15.34	93	154	\$15.34	154	154	\$15.34
J00 100-018 GRAPHICS PRINTING	0	0	0	\$0.00	15	154	\$15.32	93	154	\$15.32	93	154	\$15.32	154	154	\$15.32
J00 100-011 CAC PRINTING	0	0	0	\$0.00	8	86	\$9.53	8	86	\$9.53	8	86	\$9.53	86	86	\$9.53

KIP Cost Review Application

Username	Project #	Description
B Bink	2009-36759	Bink
A Faulder	2009-6577	Check Get
B Bink	2009-2687	Non-Bink
B Bink	2009-368	Not For Production
B Bink	2009-667	Sample Prints
D Bookman	2009-6374	Special
J Latta	2009-7456	
J Miller	2009-967	
K Harber	2009-60265	
B Jackson	887-9821	

KIP Track Print, Copy & Scan Controls



Reports Delivered Conveniently by Email



THE COLOUR OF KIP IS GREEN



KIP 700M SPECIFICATIONS

GENERAL	
Description	Monochrome wide format print/copy/scan with mono/colour scanner, 1 roll
Type	Electrophotography (LED) with organic photoconductor (OPC) and closed toner system
Speed	2 A0 size pages per minute
First print output time	18 seconds A1 size page
Warm up time	Instant from standby, <4 minutes from start up
PRINTER SPECIFICATIONS	
Print resolution	600 x 600 dpi
Paper capacity	139 sqm. roll media; 5.5 sqm. cut-sheet media
Output sizes width	210 - 914 mm
Output sizes length	2 m standard; 3.6 m optional
Media weight	Bond/Plain 64 - 84 gsm; Vellum/Translucent/Tracing 80 gsm; Film 75 micron
Media type	Bond/Plain/Vellum/Translucent/Tracing, Film (compatible with recycled & coloured bond)
ENVIRONMENT	
Electrical requirements	220 - 240 V, 50/60 Hz, 10A
Power consumption	Sleep <13 W; printing 1.44 kW
Dimensions (WxDxH)	1,245 x 680 x 611 mm
Weight	163 kg
IMAGE PROCESSING	
Controller type	KIP IPS with Windows XPe
Memory	1 GB DDR2 standard; upgradable to 2 GB
Compatible file formats	PDF, DWF, HPGL 1/2, HP-RTL, Calcomp,906/907, CALS Group 4, TIFF Group 4, PCX, CIT/TG4, VCGI, Uncompressed, Grayscale TIFF, TIFF Packbits, IOCA, EDMICS, TLC, PNG, JPEG
KIP 700m SCANNER	
Scanner type	Fully integrated - C.I.S. with KIP RTT technology
Scan resolution	600 x 600 dpi optical resolution
Scan speed	Up to 180 mm per second @ 200dpi
Scan format	TIFF, Multipage TIFF, PDF, PDF-A, Multipage PDF, DWF, Multipage DWF, JPEG, CALS
Scan destination	Local USB (removable media), unlimited IPS mailboxes (local), unlimited FTP, unlimited SMB
Original size width	279 - 914 mm
Original thickness	Up to 1.6 mm
KIP 7.4 PRINT MANAGEMENT SOFTWARE	
SOFTWARE - STANDARD	
KIP touchscreen	Concurrent print- & scan-to-file, mono file-to-print, mono copying & scanning, system management
KIP printing applications	KIP Print, KIP Cloud Printing, KIP iView & iPrint, KIP PrintNet Web Printing, KIP Windows/AutoCAD Drivers, KIP touchscreen printing
KIP Cost Review App/Track System	PC-based application to review toner/service costs
KIP Colour Advanced Scan	Colour scan-to file, direct scan to various destinations
SOFTWARE - OPTIONAL	
KIP PDF printing	Support for PDF and PostScript levels 1, 2 & 3
KIP Colour Advanced Copy & Print	Support for Colour Copy & Print directly to Konica Minolta MFPs and a wide range of supported inkjet printers
SYSTEM CONFIGURATION - STANDARD	
Multifunction system (print/copy/scan), 1 roll	Monochrome wide format printer with monochrome copy & scan and colour scan-to-file
Multifunction system (print/copy/scan), 1 roll, with standard cut-sheet paper tray	Monochrome wide format printer with monochrome copy & scan, colour scan-to-file and multi-sheet paper tray
SYSTEM CONFIGURATIONS - OPTIONAL	
Multi-sheet cassette	Multi-sheet paper tray (50 sheet capacity up to A2 - A4)
Stacking systems	Slide-in set holder kit



www.kip.com

KIP
39575 W. 13 Mile Road
Novi, MI. 48377
USA



KONICA MINOLTA

www.konicaminolta.eu

Konica Minolta
Business Solutions Europe GmbH
Europaallee 17 · 30855 Langenhagen
Germany